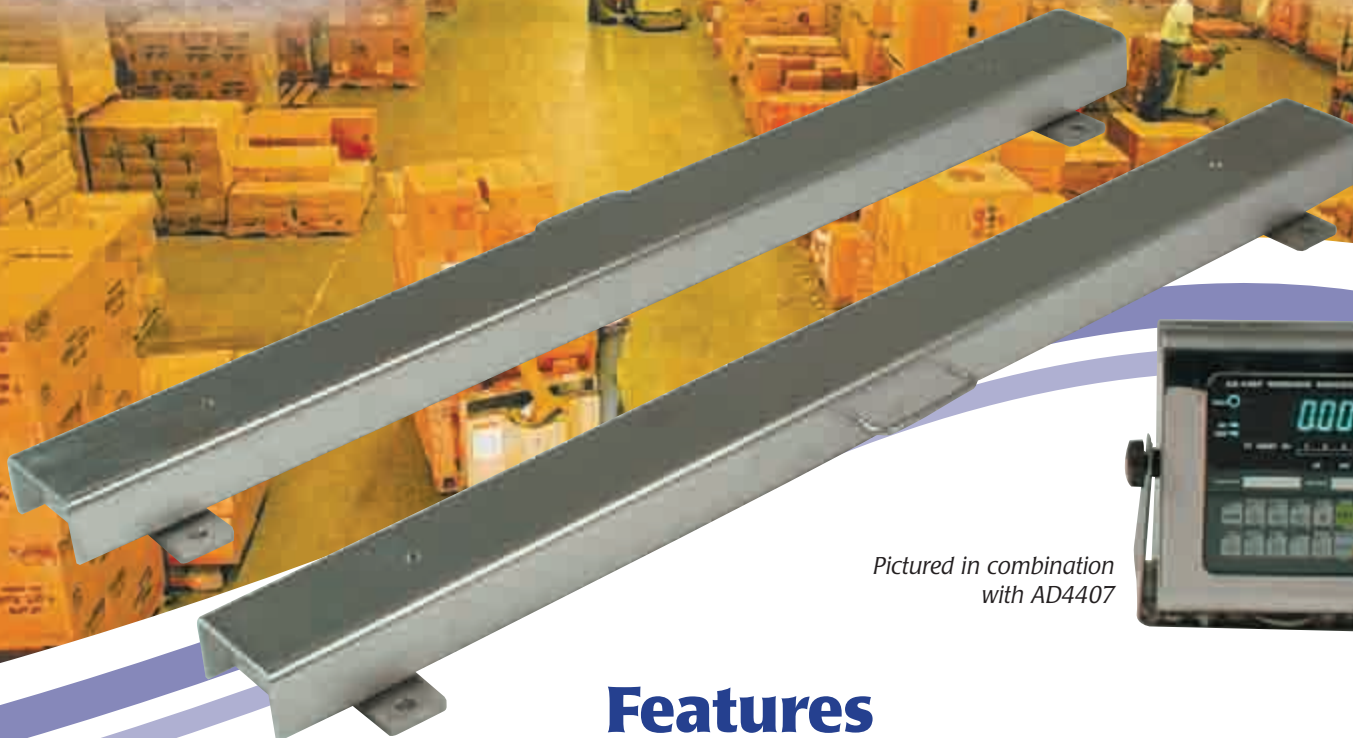


ADM Weigh Beams

Quality Product - Built to last



*Pictured in combination
with AD4407*

Features

Quality Stainless Steel Construction

304 Stainless material ensures long product life

Heavy Duty Materials

Beams formed from 5mm thickness material for greater strength

Stainless Steel Load Cells

High Resistance to hostile environments

Robust Stainless Steel Load Foot

Able to be bolted down if required

Waterproof Cable Connections

Suitable for hostile wet area locations

Highly Portable

13 kg weight makes the beams very easy to transport

Carry Handle

Enables easy handling by the user

Simple Connection

Very easy to setup for even an inexperienced operator

Polished Appearance

Visually appealing quality appearance

Connection Cable Provided

Will interface with all A&D Digital Indicators

Combinations available to suit all environments

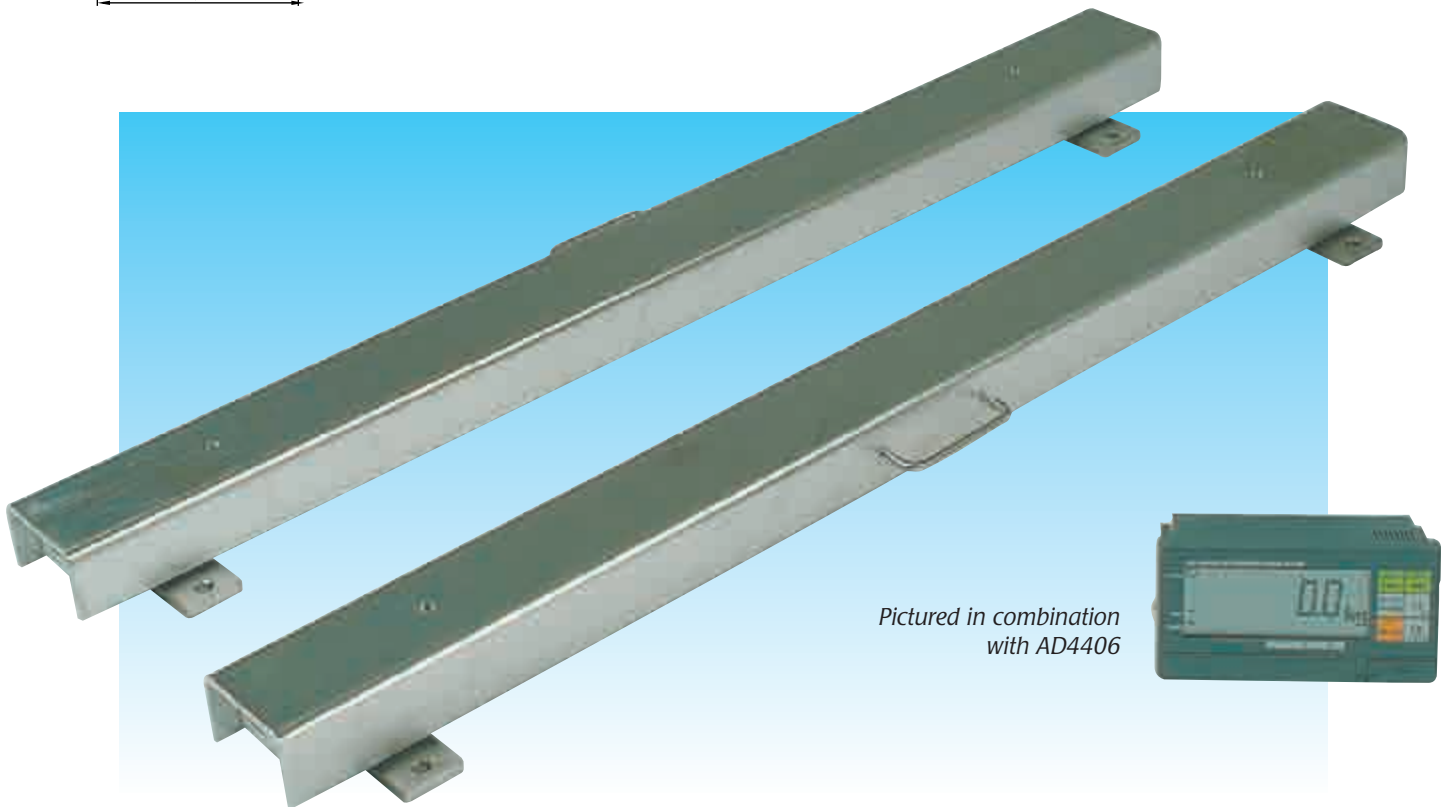
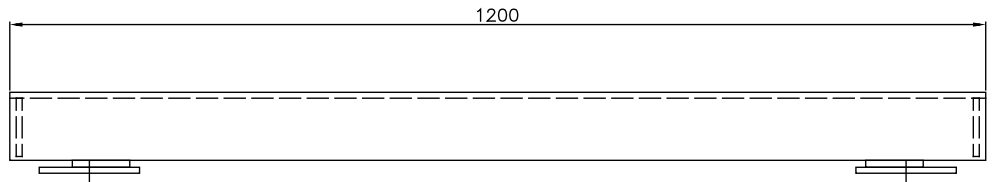
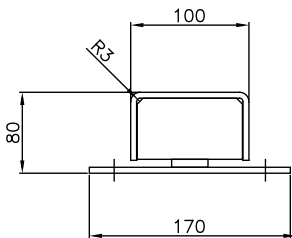
A&D ...Clearly a Better Value
A&D MERCURY PTY. LTD.

<http://www.andmercury.com.au>



Specifications

	ADM Weigh Beams
Weight Capacity (kg)	2000 kg per set of 2 beams
Load Cells	2 x LCM-T001 per beam
Load Cell Output	2mV/V
Excitation Voltage	Recommended 5 to 12V DC
	Maximum 15V DC
Weigh Beam Length	1200 mm
Weigh Beam Width	100 mm
Weigh Beam Height	Approximately 80mm
Weigh Beam Material	304 Grade Stainless Steel
Connection Cable Length	5 metres from beams to indicator
Weight of weigh beams	13 kg per beam
Indicator Connection	A&D 7 Pin Connector



*Pictured in combination
with AD4406*

AND ...Clearly a Better Value

A&D MERCURY PTY. LTD.
ACN 007 556 809

Head Office
32 Dew Street
THEBARTON
South Australia 5031
Telephone (08) 8301 8100
Facsimile (08) 8352 7409

Victorian Office
Unit 4, 313 Arden Street
KENSINGTON
Victoria 3031
Telephone (03) 9372 1522
Facsimile (03) 9372 1193

New South Wales Office
Unit 4, 14 Abbott Road
SEVEN HILLS
New South Wales 2147
Telephone (02) 9674 5466
Facsimile (02) 9674 2544

Email: salesinquiry@andmercury.com.au
Internet page: <http://www.andmercury.com.au>

Your Dealer