

NMI APPROVED STAINLESS STEEL INDICATOR

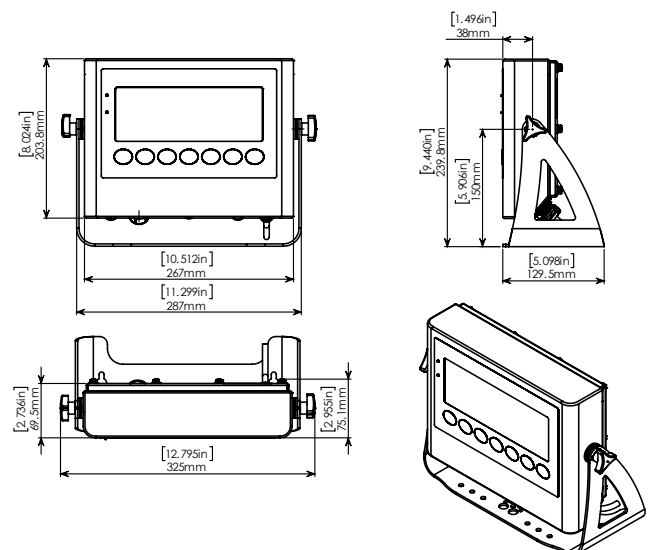
Model: ADA-4417

A&D's NMI Trade Approved ADA-4417 indicator provides fast, precise weight readings, supporting up to 100,000 divisions at 50 conversions per second. This indicator is IP69 rated with a stainless steel enclosure, has 2 bi-directional RS232 ports, and two power supply variants: AC (110-240VAC 50/60Hz) or DC (5-24 VDC).



General Specifications

- 304 Stainless steel enclosure with IP69 protection rating
- Display has 6-digit LCD with 50mm high characters
- Two RS232 bidirectional serial ports independently configurable for network, printing or remote display functions
- Flush polyester overlay with mechanical keys Counting, accumulator, checkweigh function Multiple data strings are selectable as well as customisable data strings
- NMI Approved on certificate S869 in kilograms and grams

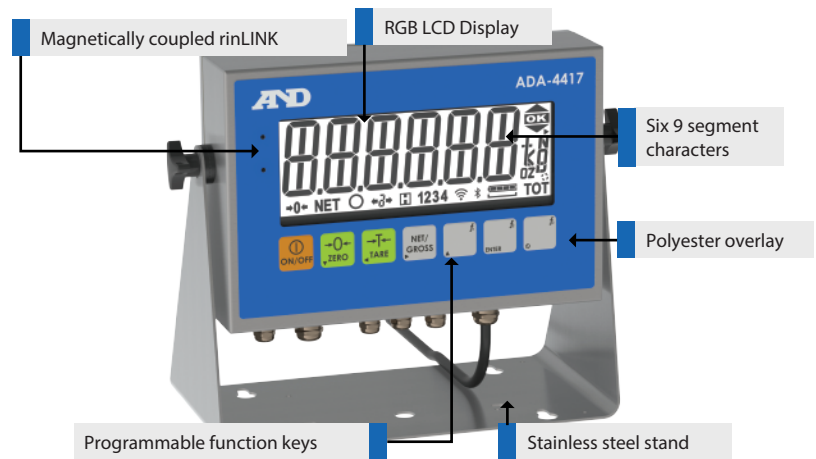


ADA-4417 Full Housing indicator

- 50.8mm (2in) LCD display with backlight - 6 digits RGB
- Backlight to make check weighing easy - 9 colours
- 9 segment display for improved readability
- Fully Sealed
- Stainless steel full housing IP69
- Two versions available: DC operation (5-24V) and

AC operation (110/240 VAC 50/60HZ)

- NMI Approved S869 in kilograms and grams



Flush polyester overlay with mechanical keys

- No membrane keys to wear out
- Easy to keep clean
- Durable chemical resistance
- High UV Resistance

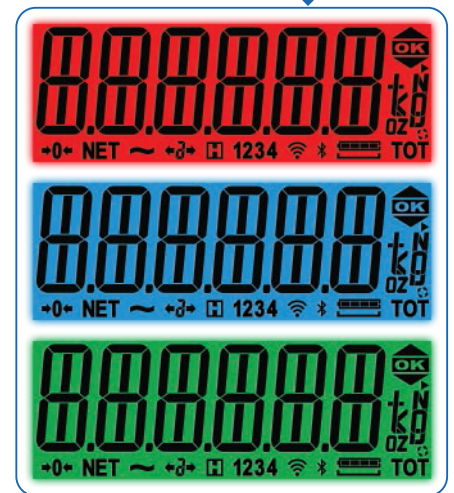
Dual serial outputs

Serial outputs are fully customisable to allow the ADA-4417 to emulate the output as well as respond to the serial commands for most common indicator brands. This means that in most cases it is possible to use the ADA-4417 as a direct drop-in replacement in legacy systems.

Firmware applications

- Custom printing
- Accumulation
- Counting
- Checkweighing
- Manual hold, peak hold, medical and livestock filtering
- Mimic/ remote display
- Advanced setpointing including latching outputs

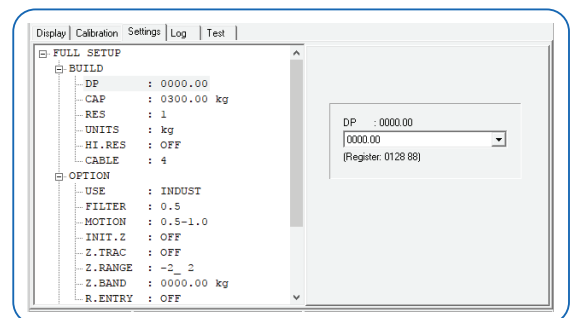
RGB LCD Display
(Selectable up to 9 colours)



ANDVIEW Programming Software for fast indicator setup via a PC

ANDVIEW is PC software that displays the complete menu structure of the indicator with convenient drop down menus for setting selection. Use ANDVIEW to:

- Enter custom print strings using the PC.
- Setup the indicator and save the configuration and calibration for maintenance purposes or load the RIS file onto multiple indicators.
- Create a real time graph from the log that is ideal for diagnostics.



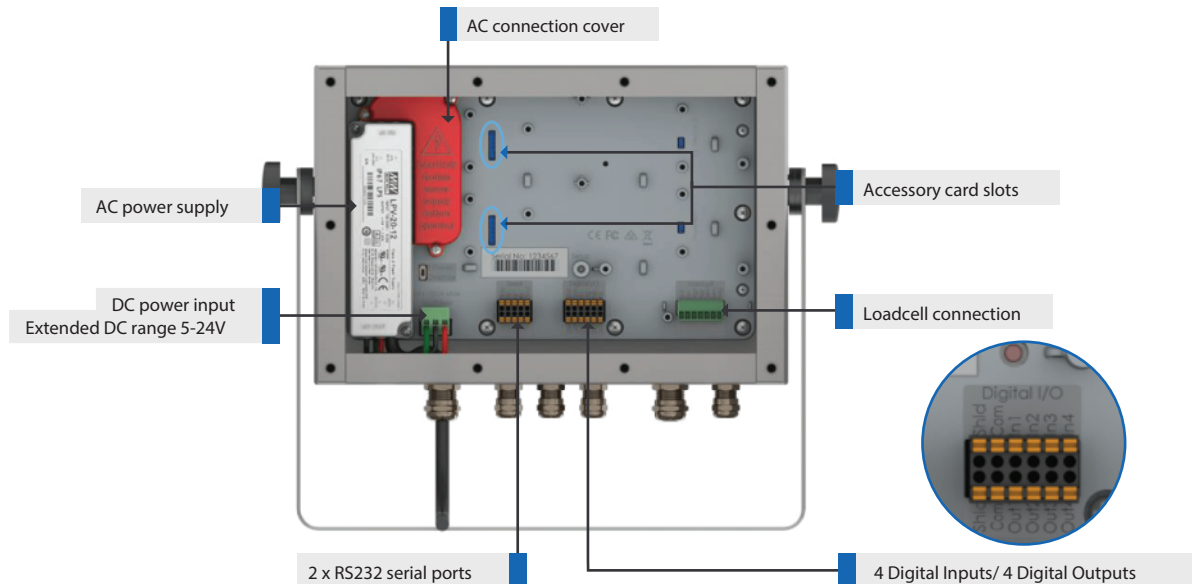
OPTILINK for establishing a temporary connection to a PC

The OPTILINK provides an isolated optical serial connection directly on the front of the indicator. It is magnetically coupled for easy access in situ for updates/ setup of the indicator, saving the installer time and effort.

The OPTILINK can be used to download new firmware or provide the connection to the PC running ANDViewer for indicator configuration.



ADA-4417 Rear



Built-in features (enabled according to firmware)

- Two RS232 bidirectional serial ports independently configurable for network, printing or remote display functions
- Four digital inputs and four high-side digital outputs that are electrically isolated. Outputs are capable of driving low voltage DC actuators directly
- Non-volatile memory storage for all operator parameters (eg: zero, tare, pieceweight etc.)
- Realtime clock/calendar
- Integrated alibi memory (DSD)
- RGB backlight for setpoint and checkweigh applications
- Two accessory card slots for increased functionality

Optional accessories

Communications cards

In addition to the two built-in RS232 ports, a third serial port can be added to extend the connectivity. This serial port can be 20mA current loop, RS232, or RS485.

Expansion cards

Expansion cards can be used instead of communication cards to extend the capability of the ADA-4417. Options include:

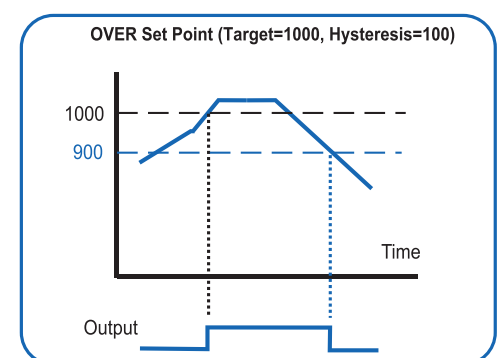
- Analogue output 4-20mA, 0-10V, isolated 16 bit output
- Ethernet IP, Profinet, Modbus TCP, EtherCat
- Rechargeable battery pack with inbuilt charger - approx. 50 hours
- Wifi/ Bluetooth - Pending

Advanced setpoints

The ADA-4417 display supports up to 8 setpoints with setpoints 1 & 2 linked to the onboard digital outputs. Setpoint status can be used to drive the onboard outputs directly, sound the buzzer, change display backlight colour, or can be transferred to external control systems using Modbus RTU or through field bus expansion. Setpoint functions include:

- OVER/ UNDER target
- CHECKWEIGH: OVER, UNDER, PASS
- Status (motion, zero, net)

Setpoint outputs can be latched and reset from remote inputs or external control.



General Specifications

Indicator		ADA-4417 (AC)	ADA-4417 (DC)
Trade Approval		NMI Approved on S869	
Resolution		Up to 100,000 divisions, minimum of 0.1uV/division Trade: Up to 10,000 divisions, minimum of 0.33uV/division - pending	
Zero Cancellation		± 2.0mV/V	
Span Adjustment		0.1mV/V to 5.0mV/V full scale	
Excitation		5V for up to 8 x 350-ohm load cells (4-wire or 6-wire plus shield) Max total load cell resistance: 3,500Ω	
A/D Type		24bit Sigma Delta with 8,388,608 internal counts, 50 updates/second	
Operating Environment		Temperature: -10° to +50°C ambient (14° to 122° F), Humidity: <90% non-condensing IP68 Rating	
Display		RGB Backlit LCD with 6-digit 50mm high characters with units and annunciators, 9 segment	
Setup and Calibration		Fully digital with visual prompting in plain messages	
Digital Filter		IIR low pass filter	
Zero Range		Selectable from ± 2% to ± 100% Full Scale	
Standard Power Input		5 to 24VDC, 4.8, 9.6,12 and 24V batteries (2.5 VA max) ON/OFF key with memory feature	
Variants	AC	AC Line Cord: 110/240VAC 50/60Hz in 12VDC 1.5A out	
	DC	DC: 5 to 24VDC (2.5 VA max)	
Case Materials		304 Stainless Steel	
Packing Weights		5.5kg/ 12.1lbs	
Optical Data Communications		rinLINK - magnetically coupled infra-red communications Conversion cables available for USB	
Input/Outputs		4 digital inputs, and 4 high-side digital outputs that are electrically isolated. Outputs are capable of driving low voltage DC actuators directly	
Serial Outputs		Two RS232 bidirectional serial ports independently configurable for network, printing or remote display functions	
Keys ROW Region		Power/Zero/Tare/Select plus three assignable function keys Manual hold, livestock filtering, x10 mode HiRes, linearisation	
Other		Custom printing, peak hold, counting, accumulation, medical filtering, check weighing, mimic/ remote display, mV/V calibration, ring network (rinCMD), auto tare	
Accessory Cards			
Communications cards		Optional: rsS485 Interface, Analog Output 4-20ma, Rechargeable Battery Pack	
Expansion cards		Ethernet IP, Profinet, Modbus TCP, EtherCat Wi-Fi/Bluetooth pending	

* Specifications are subject to change without notice